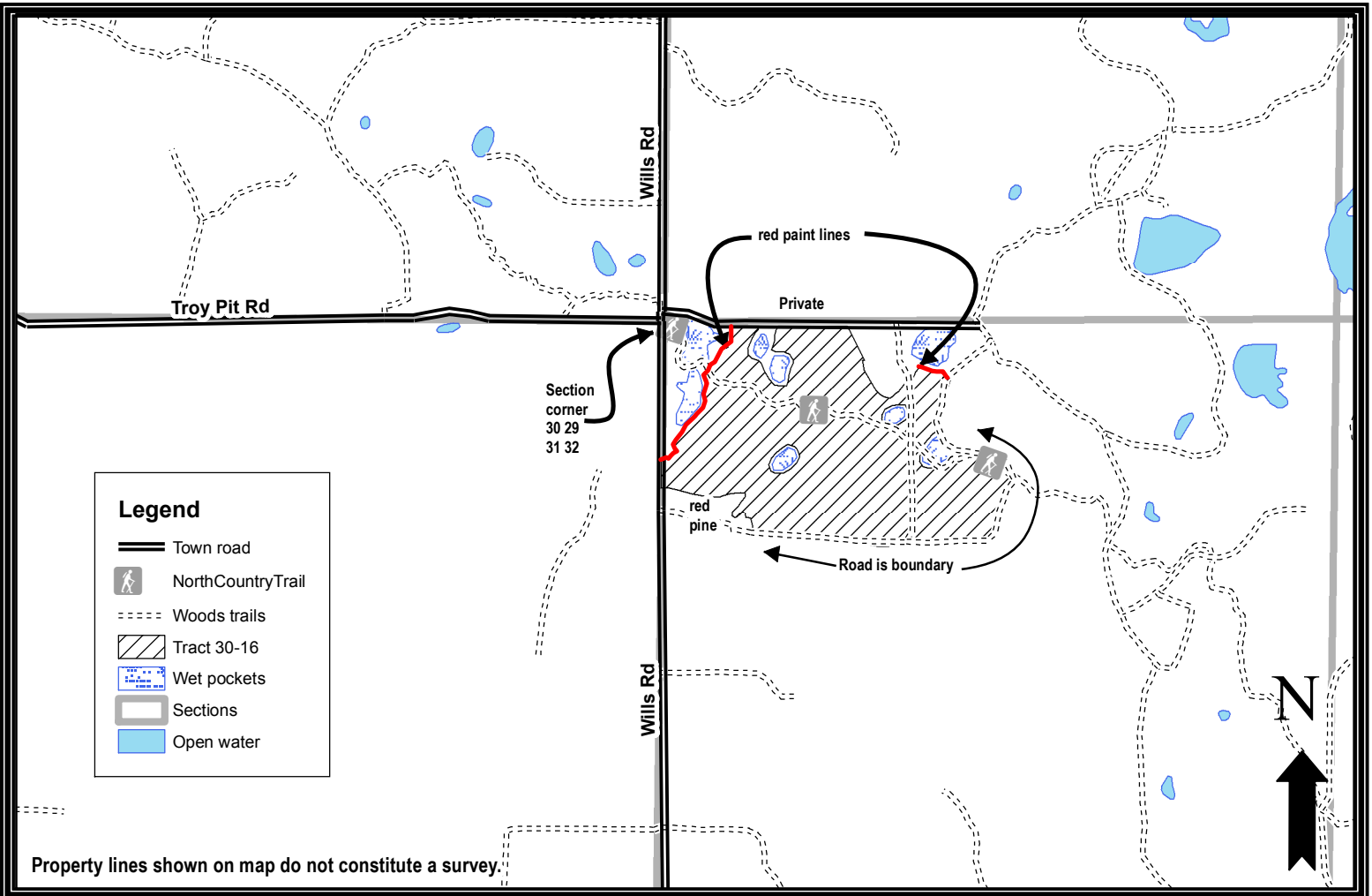


Bayfield County Forestry and Parks

| | | | | | | | |
|------------------------|------------------------|--------------------------------|------------|--------------------|----------|---------|-----|
| Forester: LeBouton | Twp: 47N | Range: 09W | Sec: 32 | Estimated Volumes: | | | |
| Acres: 68 | Township: Hughes | | | Species | 4" Cords | WT tons | MBF |
| Soil: Sand | Compartment: 121 | Stand: 40,44 | | Aspen | 870 | 2570 | |
| Topography: Rolling | Tract Number: 30-16 | Reforestation Code: Natural | | Red oak | 160 | 580 | 43 |
| Scale: 4" = 1 mile | Contract Number: | | | Red maple | 360 | 1140 | 29 |



Harvest requirements:

- This is a ticket sale.
- Sale boundaries are red paint lines, forest roads, and abrupt changes in stand type (red pine plantation on SW)
- DO NOT use wildlife openings for harvest operations or for decking wood.
- The North Country Trail runs through stand. Do not cut blue-painted trees or purple-painted trees along trail. Keep slash 18" or less within 25ft of the North Country Trail. Do not operate machinery on the North Country Trail, except where approved by Sale Administrator.
- Leave a 30-ft no-harvest buffer (1/2 tree length) around wet pockets, including any unmapped wet pockets.
- Harvest all hardwood, jack pine, and all fir 4" dbh and larger. Sever all hardwood stems 2" dbh and larger
- Do not cut snags, except for those that are a safety hazard to logging operations.
- This sale includes six (6) trees that are painted with a purple ring and a purple "X". Operator must fell and leave all trees marked with a purple "X". "X" marked trees should be cut above the purple ring and should lie as close to the high stump as possible. These trees will create ruffed grouse drumming habitat.
- Do not damage any survey monumentation.
- Prior to moving equipment on to or off the sale area, scrape or brush debris and soil from exterior surfaces.
- All roads are in place. This contract requires county authorization for all road/landing construction and places a number of other requirements on road construction and closure.
- Decking of wood along town roads will not be allowed without permission of Bayfield County.