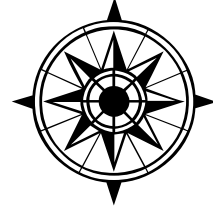


Town of Clover Zoning Districts



County Zoning Districts

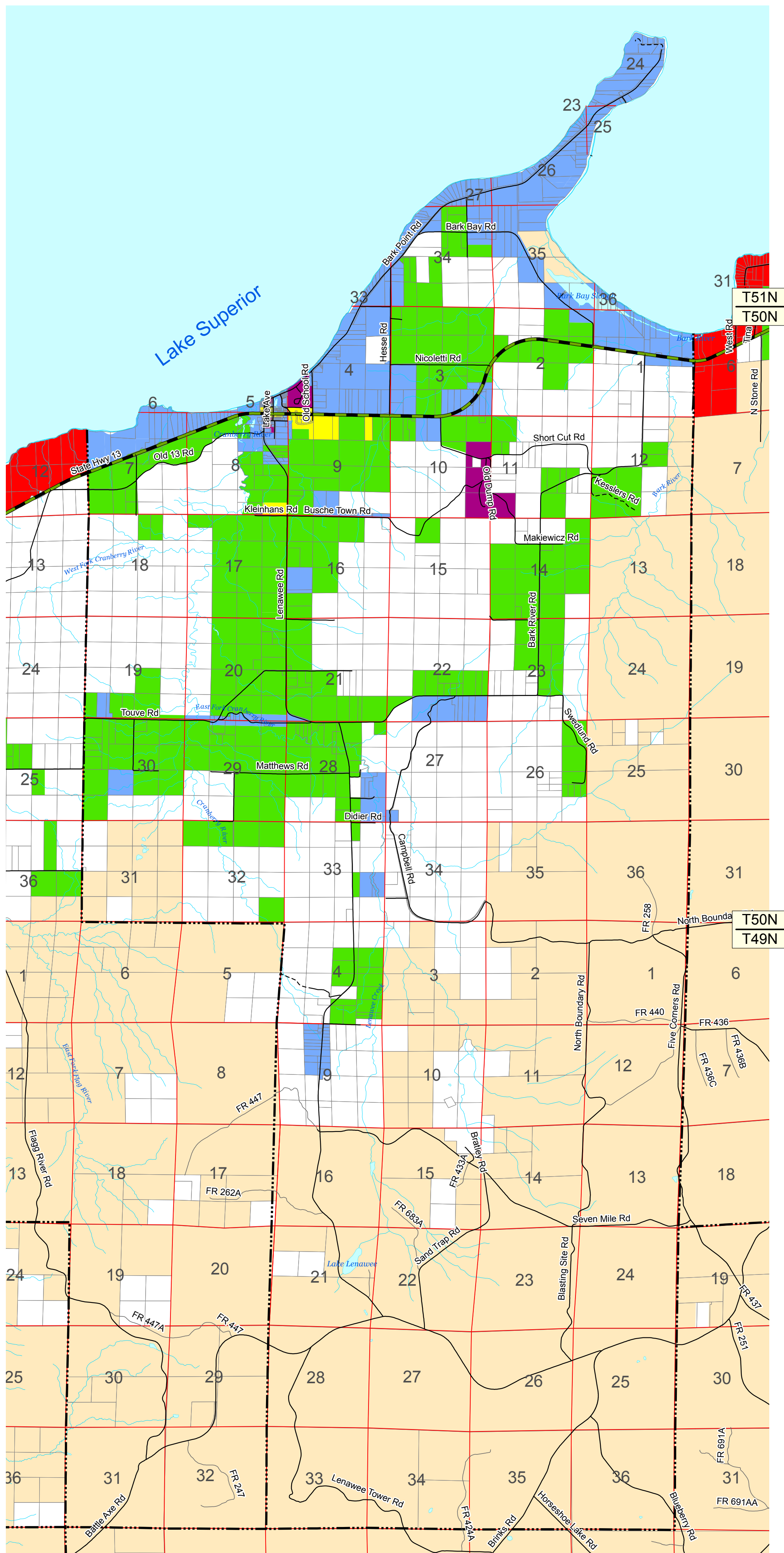
- (R1) - Residential - 1
- (R2) - Residential - 2
- (R3) - Residential - 3
- (R4) - Residential - 4
- (C) - Commercial
- (I) - Industrial
- (M) - Municipal
- (F1) - Forestry - 1
- (F2) - Forestry - 2
- (A1) - Agricultural - 1
- (A2) - Agricultural - 2
- (W) - Conservancy
- (R-RB) - Residential - Recreational Business

Roads

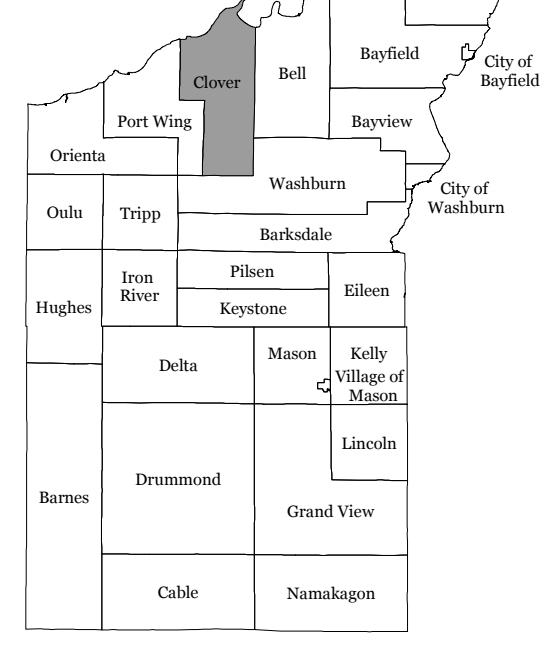
- Federal Highway
- State Highway
- County Road
- Town Road
- Forest Road
- Private Road

Other Symbols

- MCD Boundary
- Section Lines
- Parcels
- 16000 Address Grid
- Streams
- Lakes



Bayfield County

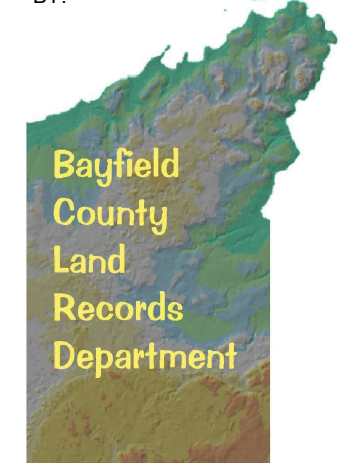


ZONING INFORMATION FURNISHED BY:



Bayfield County Zoning Department
Northwest Regional Planning Commission

CARTOGRAPHY BY:



The Zoning Districts portrayed on this map were derived from the Official Bayfield County Zoning District Map maintained by the Zoning Department. Bayfield County makes no warranty with respect to accuracy or completeness of this map and assumes no liability for its use or misuse. This map was last updated on Dec. 1, 2017.